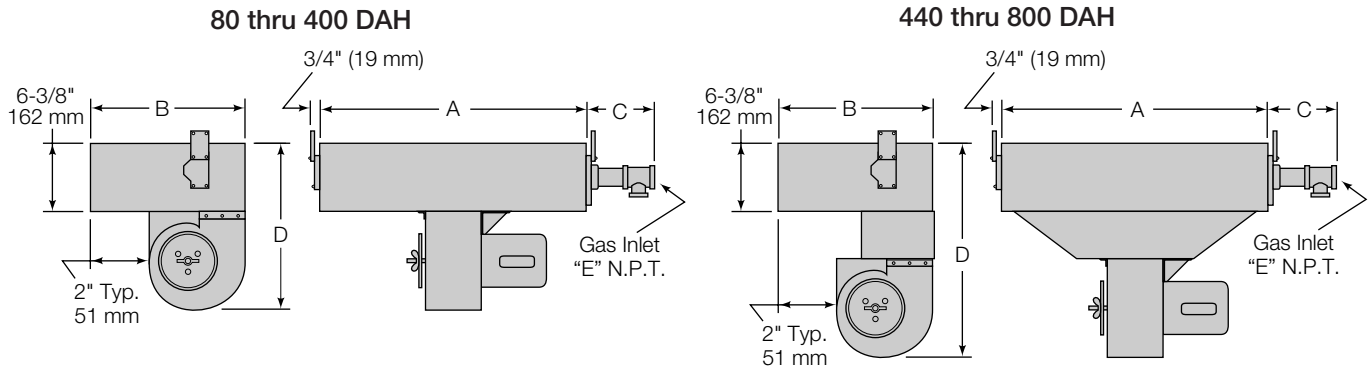


ECLIPSE AIR HEAT BURNERS

Dimensions—Series “DAH”

Data 140-2

11/93



U.S. Reissue Pat. No. 26,244
Canadian Pat. No. 743,782

English Units

| Burner Cat. No. | Assy. No. | Total Input MM Btu/Hr. | | Blower Cat. No. | Dimensions In Inches | | | | | Cross Sect. Area Sq. In. | Check Valve Pipe Style* | Approx. Ship Wt. Lbs. |
|--------------------|--------------|---------------------------|-------------------|--------------------|----------------------|----------|-------|---------|---|-----------------------------------|----------------------------------|--------------------------------|
| | | 0.8 MM Btu/Ft. | 1.0 MM Btu/Ft. | | A | B | C | D | E | | | |
| 80 DAH | 109050 | 0.8 | 1.0 | 54-54S-1/3 | 12-1/8 | 15-13/16 | 6-1/4 | 15-1/8 | 2 | 77 | D | 70 |
| 120 DAH | 109051 | 1.2 | 1.5 | 54-54S-1/3 | 18-1/8 | 15-13/16 | 6-1/4 | 15-1/8 | 2 | 116 | D | 83 |
| 160 DAH | 109052 | 1.6 | 2.0 | 65-84S-1/3 | 24-1/8 | 15-13/16 | 6-1/4 | 19-5/16 | 2 | 154 | D | 96 |
| 200 DAH | 109053 | 2.0 | 2.5 | 65-84S-1/3 | 30-1/8 | 15-13/16 | 6-1/4 | 19-5/16 | 2 | 192 | A | 129 |
| 240 DAH | 109054 | 2.4 | 3.0 | 65-84S-1/3 | 36-1/8 | 15-13/16 | 6-1/4 | 19-5/16 | 2 | 230 | A | 150 |
| 280 DAH | 109055 | 2.8 | 3.5 | 65-84S-1/2 | 42-1/8 | 15-13/16 | 6-5/8 | 19-5/16 | 2 | 269 | A | 168 |
| 320 DAH | 109056 | 3.2 | 4.0 | 65-84S-1/2 | 48-1/8 | 15-13/16 | 6-5/8 | 19-5/16 | 2 | 307 | A | 196 |
| 360 DAH | 109057 | 3.6 | 4.5 | 66-94S-3/4 | 54-1/8 | 15-13/16 | 6-5/8 | 21-3/8 | 2 | 345 | A | 216 |
| 400 DAH | 109058 | 4.0 | 5.0 | 66-94S-3/4 | 60-1/8 | 18-13/16 | 6-5/8 | 21-3/8 | 2 | 383 | A | 240 |
| 440 DAH | 109059 | 4.4 | 5.5 | 66-94S-3/4 | 66-1/8 | 18-13/16 | 7-5/8 | 27-7/8 | 3 | 422 | A | 258 |
| 480 DAH | 109060 | 4.8 | 6.0 | 66-94S-1 | 72-1/8 | 18-13/16 | 7-5/8 | 27-7/8 | 3 | 460 | A | 294 |
| 520 DAH | 109061 | 5.2 | 6.5 | 67-115S-1-1/2 | 78-1/8 | 18-13/16 | 7-5/8 | 27-7/8 | 3 | 498 | A | 336 |
| 560 DAH | 109062 | 5.6 | 7.0 | 67-115S-2 | 84-1/8 | 18-13/16 | 7-5/8 | 29-7/16 | 3 | 536 | A | 360 |
| 600 DAH | 109063 | 6.0 | 7.5 | 67-115S-2 | 90-1/8 | 18-13/16 | 7-5/8 | 29-7/16 | 3 | 575 | A | 396 |
| 640 DAH | 109064 | 6.4 | 8.0 | 67-115S-2 | 96-1/8 | 18-13/16 | 7-5/8 | 29-7/16 | 3 | 613 | A | 408 |
| 720 DAH | 109071 | 7.2 | 9.0 | 67-115S-2 | 108-1/8 | 18-13/16 | 7-5/8 | 29-7/16 | 3 | 689 | A | 450 |
| 800 DAH | 109049 | 8.0 | 10.0 | 78-126S-3 | 120-1/8 | 18-13/16 | 7-5/8 | 32-7/16 | 3 | 766 | A | 490 |

Metric Units

| Burner Cat. No. | Assy. No. | Total Input kW | | Blower Cat. No. | Dimensions In Millimeters | | | | | Cross Sect. Area Sq. Cm. | Check Valve Pipe Style* | Approx. Ship Wt. Kgs. |
|--------------------|--------------|-------------------|-------------|--------------------|---------------------------|-----|-----|-----|----|-----------------------------------|----------------------------------|--------------------------------|
| | | 769 kW/M | 962 kW/M | | A | B | C | D | E | | | |
| 80 DAH | 109050 | 234 | 293 | 54-54S-1/3 | 308 | 402 | 159 | 384 | 2" | 497 | D | 32 |
| 120 DAH | 109051 | 352 | 440 | 54-54S-1/3 | 460 | 402 | 159 | 384 | 2" | 748 | D | 38 |
| 160 DAH | 109052 | 469 | 586 | 65-84S-1/3 | 613 | 402 | 159 | 491 | 2" | 994 | D | 44 |
| 200 DAH | 109053 | 586 | 733 | 65-84S-1/3 | 765 | 402 | 159 | 491 | 2" | 1239 | A | 59 |
| 240 DAH | 109054 | 703 | 879 | 65-84S-1/3 | 918 | 402 | 159 | 491 | 2" | 1484 | A | 68 |
| 280 DAH | 109055 | 821 | 1026 | 65-84S-1/2 | 1070 | 402 | 168 | 491 | 2" | 1736 | A | 76 |
| 320 DAH | 109056 | 938 | 1172 | 65-84S-1/2 | 1222 | 402 | 168 | 491 | 2" | 1981 | A | 89 |
| 360 DAH | 109057 | 1055 | 1319 | 66-94S-3/4 | 1375 | 402 | 168 | 543 | 2" | 2226 | A | 98 |
| 400 DAH | 109058 | 1172 | 1466 | 66-94S-3/4 | 1527 | 478 | 168 | 543 | 2" | 2471 | A | 109 |
| 440 DAH | 109059 | 1290 | 1612 | 66-94S-3/4 | 1680 | 478 | 194 | 708 | 3" | 2723 | A | 117 |
| 480 DAH | 109060 | 1407 | 1759 | 66-94S-1 | 1832 | 478 | 194 | 708 | 3" | 2968 | A | 133 |
| 520 DAH | 109061 | 1524 | 1905 | 67-115S-1-1/2 | 1984 | 478 | 194 | 708 | 3" | 3213 | A | 152 |
| 560 DAH | 109062 | 1641 | 2052 | 67-115S-2 | 2137 | 478 | 194 | 748 | 3" | 3458 | A | 163 |
| 600 DAH | 109063 | 1759 | 2198 | 67-115S-2 | 2289 | 478 | 194 | 748 | 3" | 3710 | A | 180 |
| 640 DAH | 109064 | 1876 | 2345 | 67-115S-2 | 2442 | 478 | 194 | 748 | 3" | 3955 | A | 185 |
| 720 DAH | 109071 | 2110 | 2638 | 67-115S-2 | 2746 | 478 | 194 | 748 | 3" | 4445 | A | 204 |
| 800 DAH | 109049 | 2345 | 2931 | 78-126S-3 | 3051 | 478 | 194 | 824 | 3" | 4942 | A | 222 |

* See page 2 for check valve piping styles.

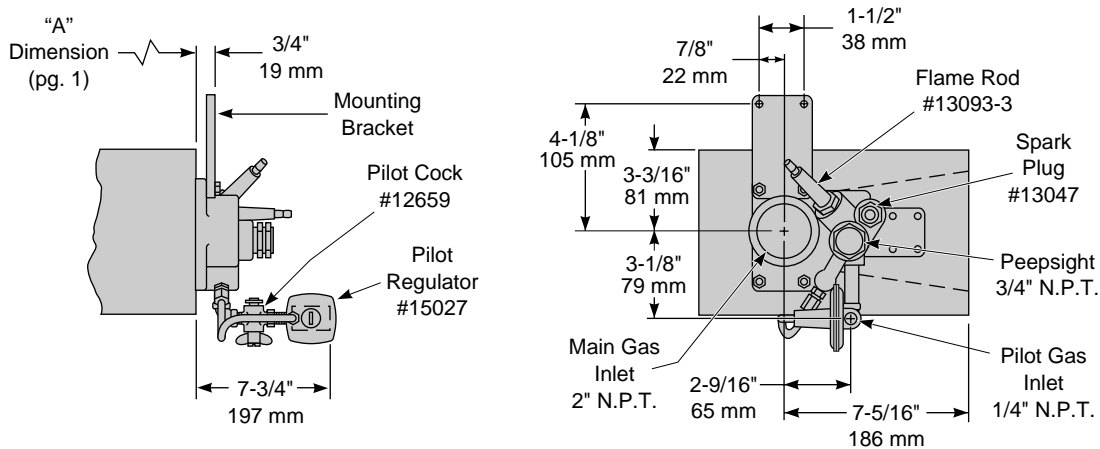
† See Data 140-5 for blower details.



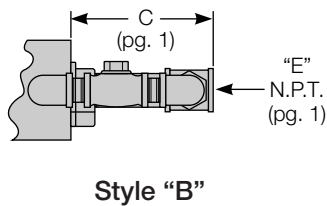
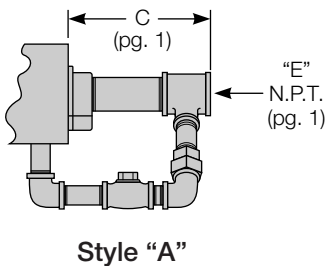
ECLIPSE COMBUSTION, INC.

Dimensions (Continued)

Pilot Components & Dimensions



Check Valve Pipe Styles

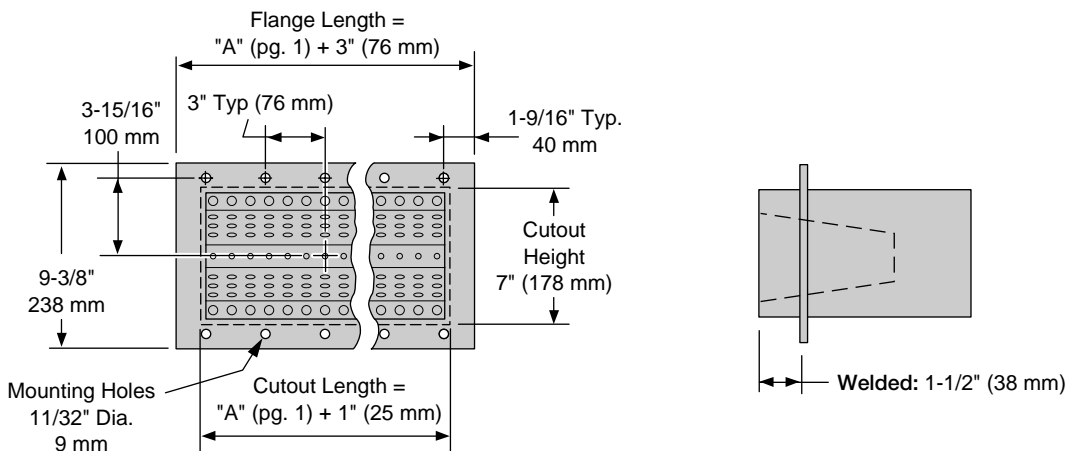


Check Valve Assembly No.

| Burner | Assy. | N.P.T. |
|------------------|--------|--------|
| 80 DAH | 550088 | 1/2" |
| 120 & 160 DAH | 550092 | 3/4" |
| 200 & 240 DAH | 550096 | 1" |
| 280 thru 400 DAH | 550100 | 1-1/4" |
| 440 thru 720 DAH | 550104 | 1-1/2" |
| 800 DAH | 550108 | 2" |

Mounting Options

All-Welded Pressure Sealed Continuous Flange



Note: Due to insufficient clearance between the blower and the front plane of the burner (2" typ., pg. 1), neither 201 AH Brackets for slot firing, nor non-welded flanges can be used with DAH burners.



ECLIPSE COMBUSTION, INC.